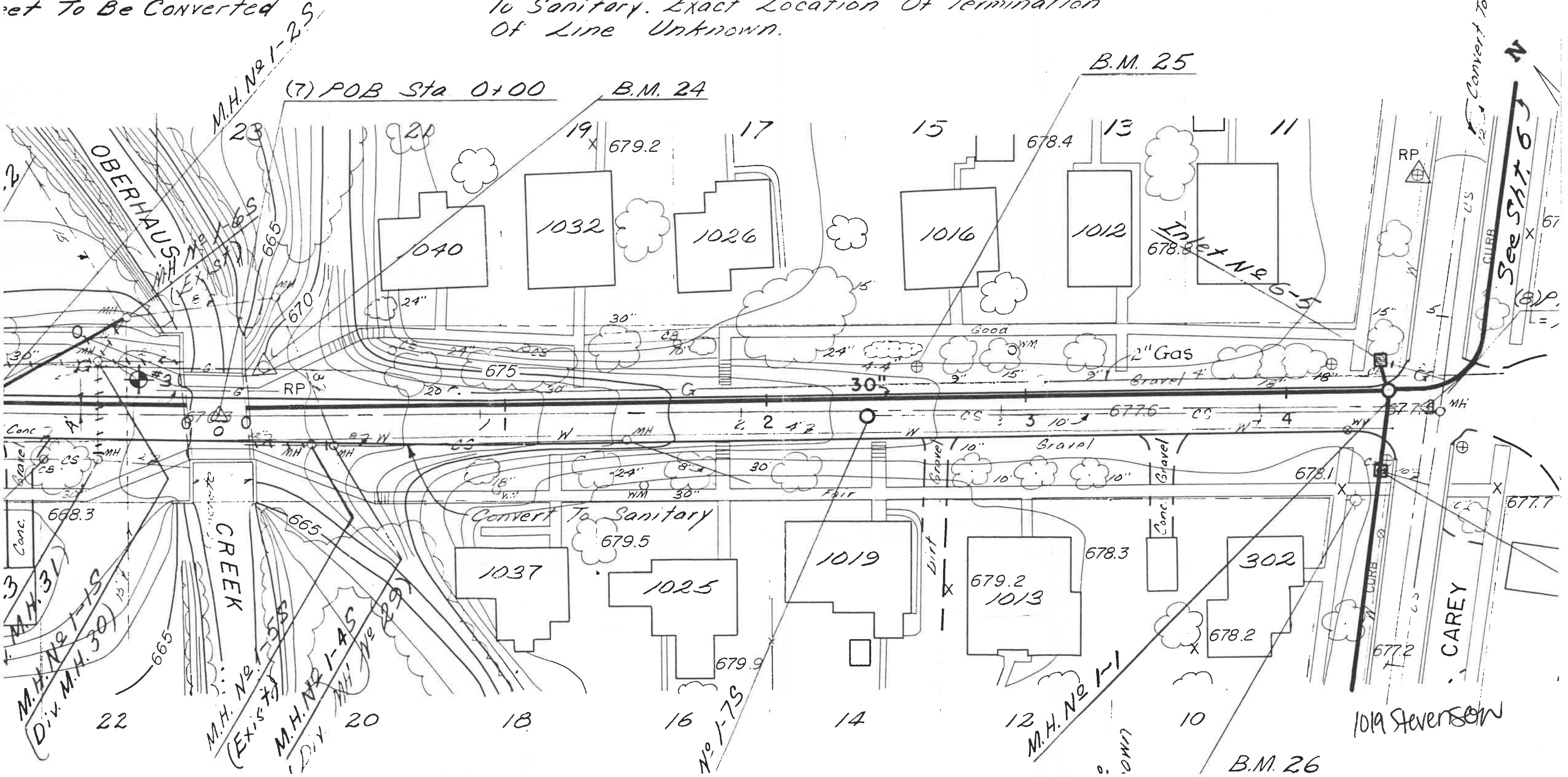


ed Sewer On West
 an Between Oberhaus
 et To Be Converted

Note:

Existing 10" Combined Sewer In Center
 Of Stevenson Street To Be Converted
 To Sanitary. Exact Location Of Termination
 Of Line Unknown.



Convert To Sanitary

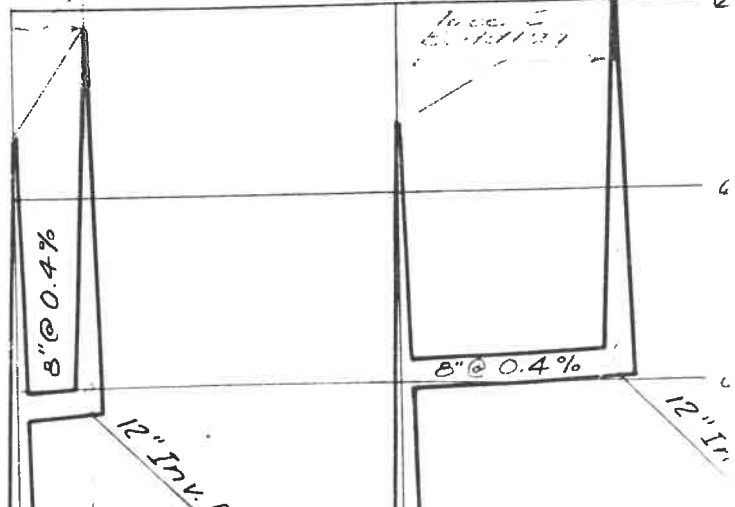
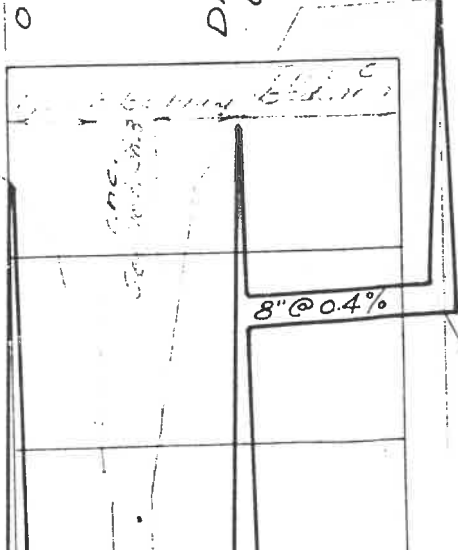
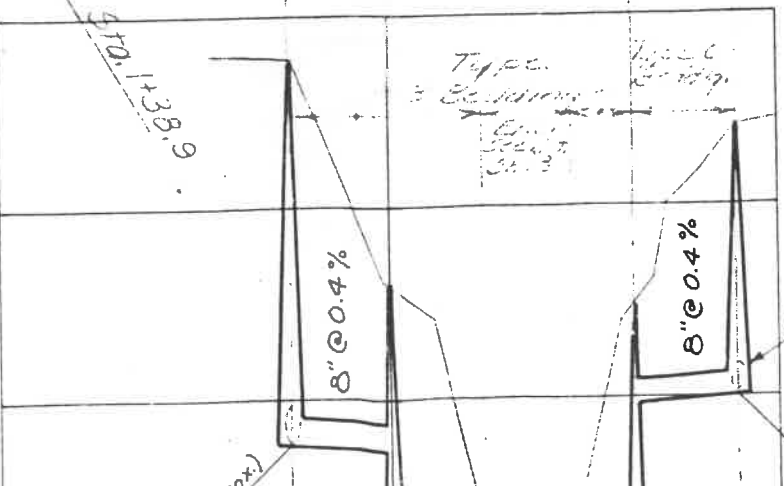
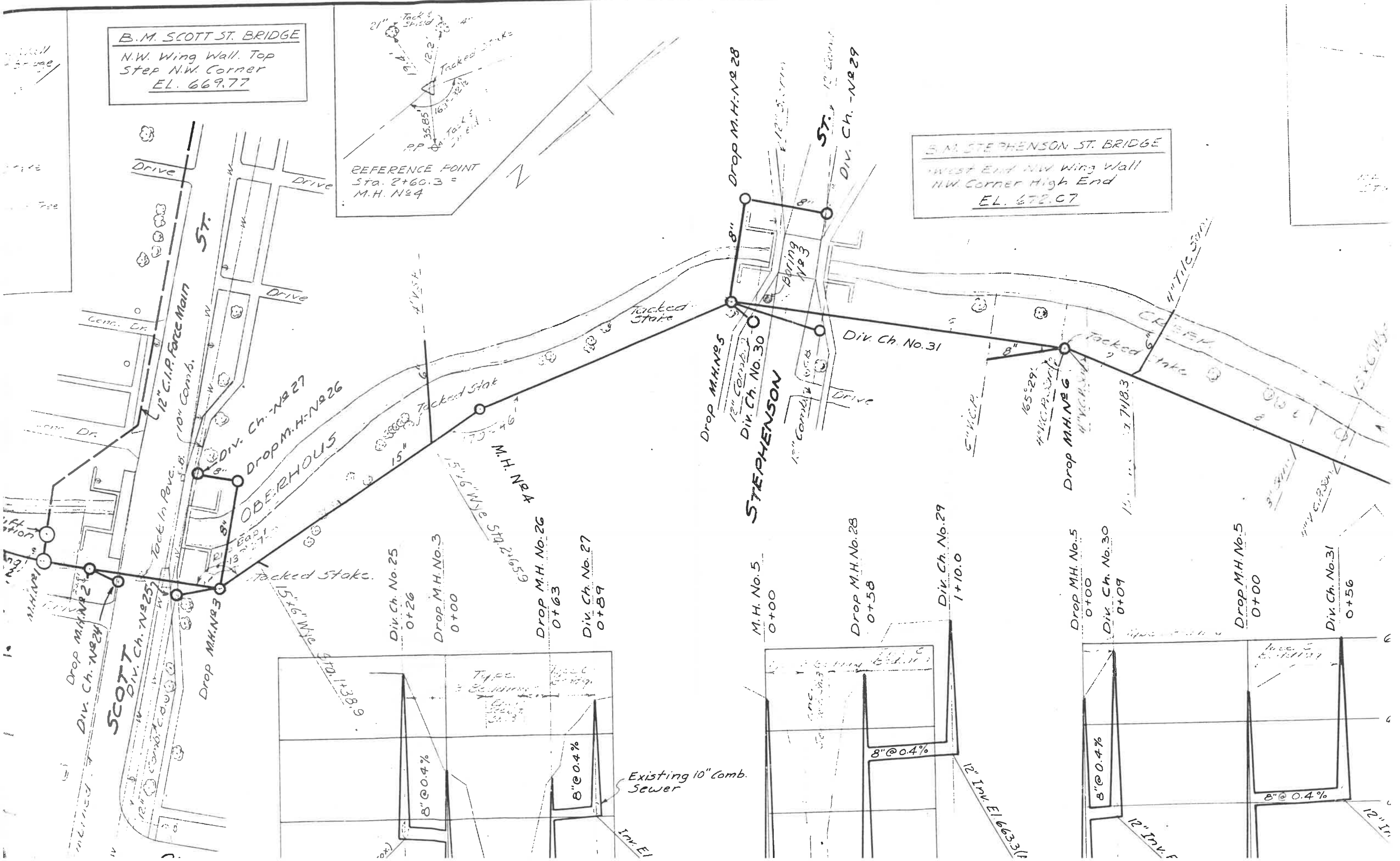
See SH. 63

1019 Stevenson

B.M. SCOTT ST. BRIDGE
 N.W. Wing Wall Top
 Step N.W. Corner
 EL. 669.77

REFERENCE POINT
 Sta. 2+60.3 =
 M.H. No. 4

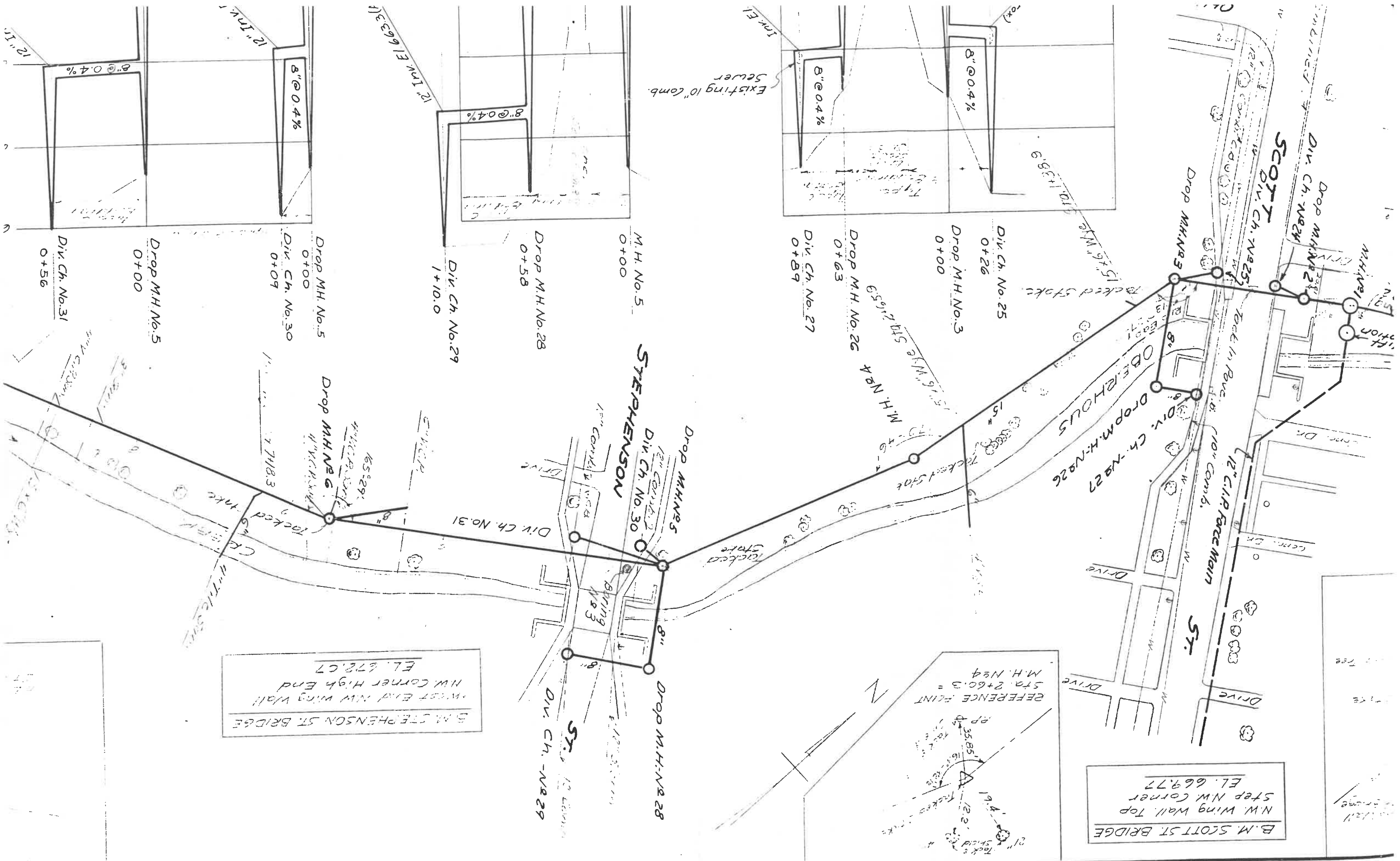
B.M. STEPHENSON ST. BRIDGE
 West End NW Wing Wall
 NW Corner High End
 EL. 672.07



Existing 10" Comb. Sewer

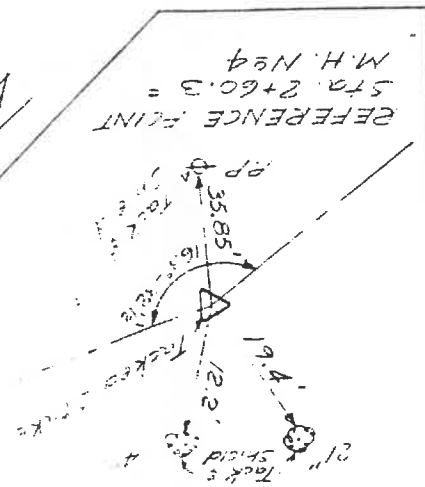
12" Inv. El. 663.31

12" Inv.



B.M. SCOTT ST BRIDGE
 N.W. Wing Wall, Top
 Step NW Corner
 EL. 669.77

B.M. STEPHENSON ST BRIDGE
 NW Corner NW Wing Wall
 EL. 678.07



- Drop M.H. No. 1
- Drop M.H. No. 2
- Drop M.H. No. 3
- Drop M.H. No. 4
- Drop M.H. No. 5
- Drop M.H. No. 6
- Drop M.H. No. 28
- Drop M.H. No. 29
- Drop M.H. No. 30
- Drop M.H. No. 31

